



AssemblyNet volumetry report

version 1.0 release 10-Nov-2020

Subject: job283144

Sex

UNKNOWN

Age

UNKNOWN

Report date

24-Mar-2022

Image orientation

Neurological

Scale factor

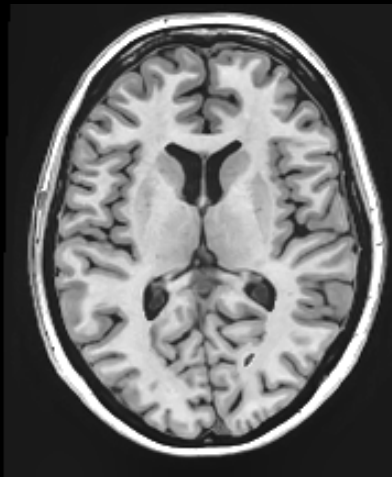
0.79

SNR

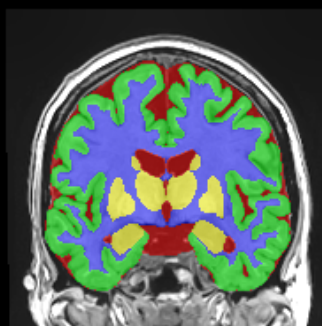
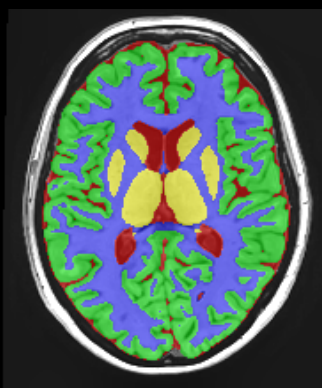
38.74

Quality control

A



Tissue segmentation



Tissue	Volume (cm ³ / %)
White Matter (WM)	430.35 / 30.593
Grey Matter (GM)	763.89 / 54.304
Subcortical GM	44.47 / 3.161
Cortical GM	608.67 / 43.270
Cerebellar GM	110.75 / 7.873
Cerebro Spinal Fluid (CSF)	193.92 / 13.786
Brain (WM+GM)	1194.24 / 84.897
Intracranial Cavity (IC)	1406.69 / 100.000

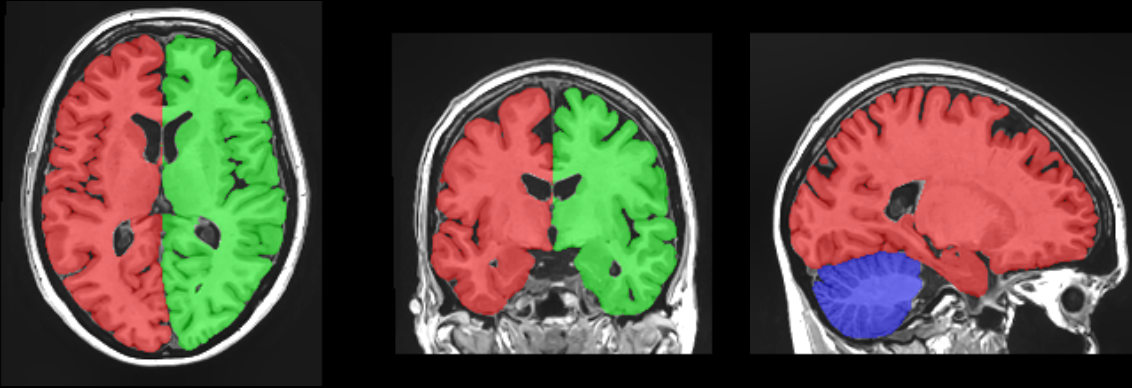
All the volumes are presented in absolute value (measured in cm³) and in relative value (measured in relation to the IC volume).

The quality control evaluates the input image quality after preprocessing. **A** = good, **B** = moderate (i.e., the output requires human verification) and **C** = bad (i.e., the output should not be used).

The Asymmetry Index is calculated as the difference between right and left volumes divided by their mean (in percent).

All the result images are located in the MNI space (neurological orientation).

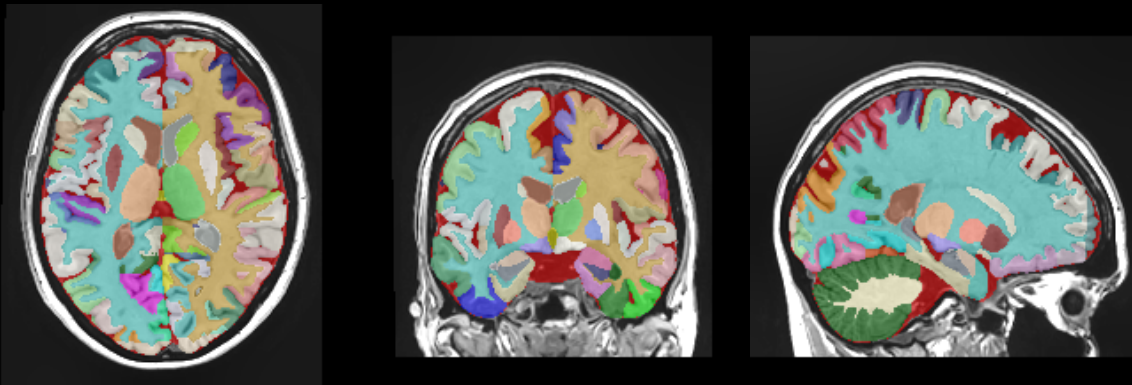
Macrostructure segmentation



Structure	Total (cm^3 / %)	Right (cm^3 / %)	Left (cm^3 / %)	Asymmetry (%)
Cerebrum	1057.37 / 75.167	523.90 / 37.243	533.47 / 37.924	-1.8114
Cerebrum WM	404.24 / 28.737	198.40 / 14.104	205.84 / 14.633	-3.6829
Cerebrum GM	653.14 / 46.431	325.50 / 23.140	327.63 / 23.291	-0.6532
Cerebellum*	126.04 / 8.960	64.17 / 4.561	61.88 / 4.399	3.6301
Cerebellum WM	26.12 / 1.857	13.10 / 0.931	13.02 / 0.925	0.6531
Cerebellum GM	99.93 / 7.104	51.06 / 3.630	48.86 / 3.473	4.4083
Vermis	10.82 / 0.769			
Brainstem	18.53 / 1.317			

* Cerebellum volumes do not include vermis volume.

Structure segmentation



Subcortical	Total (cm^3 / %)	Right (cm^3 / %)	Left (cm^3 / %)	Asymmetry (%)
Accumbens	0.89 / 0.063	0.40 / 0.029	0.48 / 0.034	-18.1818
Amygdala	2.23 / 0.159	1.18 / 0.084	1.05 / 0.075	11.1072
Basal Forebrain	0.83 / 0.059	0.32 / 0.023	0.51 / 0.037	-47.4383
Caudate	6.23 / 0.443	3.13 / 0.222	3.10 / 0.220	0.8621
Hippocampus	7.94 / 0.564	4.07 / 0.289	3.87 / 0.275	4.9741
Pallidum	2.65 / 0.188	1.26 / 0.089	1.39 / 0.099	-9.9553
Putamen	8.72 / 0.620	4.35 / 0.309	4.37 / 0.310	-0.3443
Thalamus	14.98 / 1.065	7.40 / 0.526	7.59 / 0.539	-2.4876
Ventral DC	9.35 / 0.665	4.58 / 0.326	4.77 / 0.339	-4.1368

Cortical	Total (cm ³ / %)	Right (cm ³ / %)	Left (cm ³ / %)	Asymmetry (%)
Frontal lobe	196.76 / 13.987	98.64 / 7.012	98.12 / 6.975	0.5250
Frontal pole	7.53 / 0.536	3.96 / 0.282	3.57 / 0.254	10.3983
Gyrus rectus	4.33 / 0.308	1.95 / 0.139	2.38 / 0.169	-19.9526
Opercular inf. frontal gyrus	8.38 / 0.596	4.23 / 0.301	4.15 / 0.295	1.9414
Orbital inf. frontal gyrus	3.40 / 0.241	1.56 / 0.111	1.83 / 0.130	-16.0428
Triangular inf. frontal gyrus	10.33 / 0.734	5.15 / 0.366	5.18 / 0.368	-0.5658
Medial frontal cortex	3.85 / 0.274	1.35 / 0.096	2.50 / 0.178	-59.5082
Middle frontal gyrus	39.16 / 2.784	18.82 / 1.338	20.35 / 1.446	-7.8238
Anterior orbital gyrus	4.52 / 0.321	2.01 / 0.143	2.51 / 0.178	-22.1912
Lateral orbital gyrus	6.68 / 0.475	3.67 / 0.261	3.00 / 0.213	20.1088
Medial orbital gyrus	9.28 / 0.659	4.50 / 0.320	4.77 / 0.339	-5.8057
Posterior orbital gyrus	5.91 / 0.420	2.65 / 0.189	3.25 / 0.231	-20.1658
Precentral gyrus	28.94 / 2.058	14.50 / 1.031	14.44 / 1.027	0.4256
Precentral gyrus medial segment	5.15 / 0.366	2.66 / 0.189	2.50 / 0.177	6.2519
Subcallosal area	2.23 / 0.158	1.08 / 0.077	1.15 / 0.082	-5.8115
Sup. frontal gyrus	32.92 / 2.340	17.26 / 1.227	15.66 / 1.114	9.6810
Sup. frontal gyrus medial segment	12.69 / 0.902	7.58 / 0.539	5.11 / 0.363	38.9497
Supplementary motor cortex	11.45 / 0.814	5.69 / 0.405	5.76 / 0.410	-1.2686
Parietal lobe	111.19 / 7.904	55.33 / 3.933	55.86 / 3.971	-0.9475
Angular gyrus	21.43 / 1.523	11.01 / 0.783	10.42 / 0.741	5.4835
Postcentral gyrus	22.64 / 1.610	10.56 / 0.751	12.08 / 0.859	-13.4124
Postcentral gyrus medial segment	1.98 / 0.141	0.93 / 0.066	1.05 / 0.074	-11.5768
Precuneus	27.22 / 1.935	13.98 / 0.994	13.24 / 0.941	5.4550
Sup. parietal lobule	19.74 / 1.403	9.30 / 0.661	10.45 / 0.743	-11.6640
Supramarginal gyrus	18.18 / 1.292	9.55 / 0.679	8.62 / 0.613	10.2107
Temporal lobe	123.73 / 8.796	63.70 / 4.529	60.03 / 4.267	5.9395
Fusiform gyrus	17.15 / 1.219	9.81 / 0.698	7.34 / 0.522	28.8003
Planum polare	4.34 / 0.309	1.97 / 0.140	2.37 / 0.169	-18.7773
Planum temporale	3.99 / 0.284	1.99 / 0.142	2.00 / 0.142	-0.1582
Inf. temporal gyrus	27.16 / 1.931	13.57 / 0.964	13.60 / 0.967	-0.2268
Middle temporal gyrus	32.57 / 2.315	16.70 / 1.187	15.87 / 1.129	5.0432
Sup. temporal gyrus	16.63 / 1.182	7.85 / 0.558	8.78 / 0.624	-11.2050
Transverse temporal gyrus	3.49 / 0.248	1.82 / 0.129	1.68 / 0.119	8.1374
Temporal pole	18.39 / 1.307	10.00 / 0.711	8.39 / 0.596	17.5586
Occipital lobe	99.04 / 7.041	48.08 / 3.418	50.96 / 3.623	-5.8237
Calcarine cortex	8.24 / 0.586	4.05 / 0.288	4.19 / 0.298	-3.4698
Cuneus	12.83 / 0.912	6.10 / 0.433	6.74 / 0.479	-9.9822
Lingual gyrus	21.72 / 1.544	10.50 / 0.747	11.22 / 0.798	-6.6012
Occipital fusiform gyrus	9.71 / 0.690	4.94 / 0.351	4.77 / 0.339	3.5618
Inf. occipital gyrus	17.29 / 1.229	8.70 / 0.618	8.59 / 0.611	1.2605
Middle occipital gyrus	13.78 / 0.980	5.85 / 0.416	7.93 / 0.563	-30.1009
Sup. occipital gyrus	9.61 / 0.683	4.92 / 0.350	4.69 / 0.333	4.8973
Occipital pole	5.86 / 0.416	3.01 / 0.214	2.84 / 0.202	5.9069

Limbic cortex	47.57 / 3.382	22.96 / 1.632	24.61 / 1.749	-6.9096
Entorhinal area	5.06 / 0.359	2.44 / 0.173	2.62 / 0.186	-7.1228
Anterior cingulate gyrus	12.36 / 0.879	5.48 / 0.389	6.88 / 0.489	-22.7816
Middle cingulate gyrus	12.02 / 0.854	6.20 / 0.441	5.82 / 0.413	6.4007
Posterior cingulate gyrus	10.47 / 0.744	5.37 / 0.382	5.10 / 0.362	5.2219
Parahippocampal gyrus	7.67 / 0.545	3.48 / 0.247	4.19 / 0.298	-18.5975
Insular cortex	30.38 / 2.160	14.69 / 1.044	15.70 / 1.116	-6.6277
Anterior insula	8.49 / 0.603	4.26 / 0.303	4.23 / 0.301	0.5953
Posterior insula	4.48 / 0.318	2.17 / 0.154	2.30 / 0.164	-5.9644
Central operculum	7.97 / 0.567	3.74 / 0.266	4.24 / 0.301	-12.5223
Frontal operculum	4.39 / 0.312	2.22 / 0.158	2.17 / 0.154	2.4105
Parietal operculum	5.06 / 0.360	2.30 / 0.164	2.76 / 0.196	-17.8923

CSF	Total (cm ³ / %)	Right (cm ³ / %)	Left (cm ³ / %)	Asymmetry (%)
Inf. Lateral Ventricle	0.92 / 0.066	0.57 / 0.041	0.35 / 0.025	47.0488
Lateral Ventricle	23.68 / 1.684	11.32 / 0.805	12.36 / 0.879	-8.7490
3rd Ventricle	1.43 / 0.102			
4th Ventricle	1.90 / 0.135			
External CSF	165.99 / 11.800			

Cerebellar vermis	Total (cm ³ / %)
Lobules I-V	5.10 / 0.363
Lobules VI-VII	2.42 / 0.172
Lobules VIII-X	3.30 / 0.235